

ELEKTROTECH KFT

DeviceNumber:060206-R18-B

Part number: **DR-05R1WEC**

Dimensions: **Φ5mm**

Colors: **RED**

Epoxy color: **WATER CLEAR**

Dice Matrial: **AlInGaP**

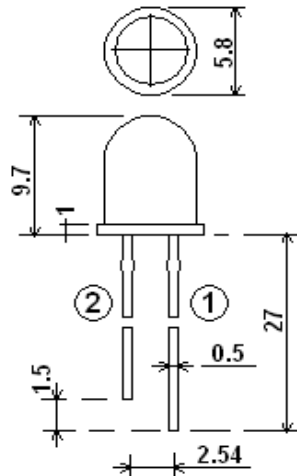
■ ABSOLUTE MAXIMUM RATING (Ta=25°C)

Description	Symbol	Value	Unit
Forward Current	IF	30	mA
Reverse Voltage	VR	5	V
Pulse Forward current*1	IFP	100	mA
Operating Temp.	Topr	-20~+85	°C
Storage Temp.	Tstg	-25~+100	°C
Soldering Temp*2	Tsol	+260	°C

■ ELECTRO-OPTICAL CHARACTERISTICS(Ta=25°C)

Description	Symbol	Conditions	Min	Typ	Max	Unit
Forward Voltage	IF	If=20mA	3		3,6	V
Reverse Current	IR	Vr=5V			15	μA
Peak Wave length	λp	If=20mA	520		530	nm
Viewing Angle 2θ ^{1/2}	Δθ			18		deg
Luminous Intensity	IV	If=20MA	15000		18000	med

■ PACKAGE DIMENSIONS



1.ANODE
2.CATHODE

Note:

- 1.The data in the specification is measured with SCE's test instrument.
- 2.All dimensions are in milimeters; Lead spacing is measured where the leads emerge from the package.; Protruded resin under flange 1.5mm Max.
- 3.*1:IFP Conditions—Pulse Width≤10msec and Duty ≤1/10
- 4.*2:Soldering time≤5seconds

CHECK BY:

MANAGER BY:

APPROVAL BY: